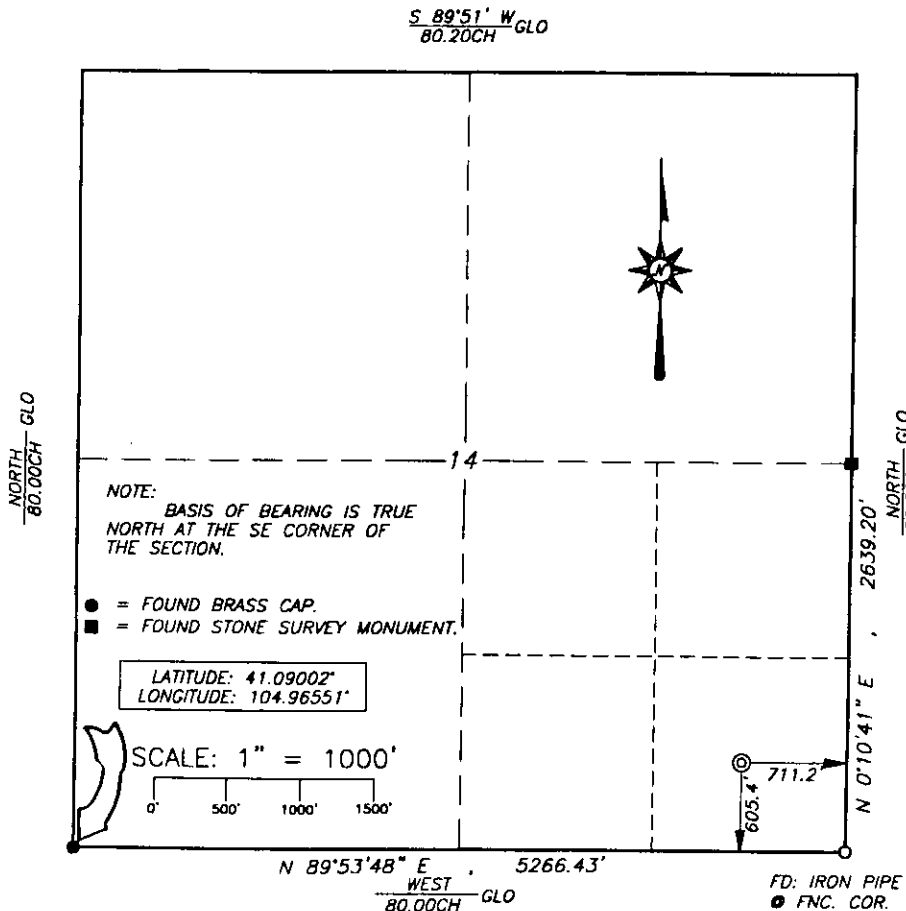


State of Wyoming Corner Record

(In compliance with the CORNER PERPETUATION AND FILING ACT, Wyoming Statutes, 1977, Section 36-11-101, et. seq., and the Rules and Regulations of the Board of Registration for Professional Engineers and Professional Land Surveyors)

Reverse side of this form may be used if more space is needed.

Record of original survey and citation of source of historical information (if corner is lost or obliterated). Description of corner monumentation evidence found and/or monuments and accessories established to perpetuate the location of this corner. Sketch of relative location of monument, accessories, and reference points with course and distance to adjacent corner(s) (if determined in this survey). Method and rationale for reestablishment of lost or obliterated corner.



FOUND: BRASS CAP ON 1/2" IRON PIPE 0.4' ABOVE GROUND IN MOUND OF STONES.

SET: NOTHING.



RECORDED 6/02/2003 AT 4:38 PM REC# 353947 BK# 1730 PG# 1586
DEBRA K. LATHROP, CLERK OF LARAMIE COUNTY, WY PAGE 1 OF 1

Date of Field Work: JUNE 13, 2002 Office Reference: JOB # 53-02

CROSS INDEX DIAGRAM

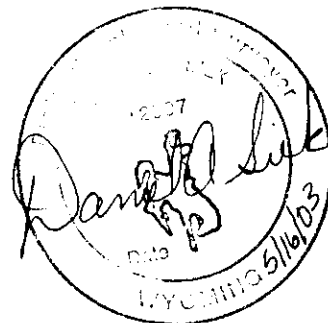
1	2	3	4	5	6	7	8	9	10	11	12	13	14	15	16	17	18	19	20	21	22	23	24	25	
A																									
B																									
C	6																								
D																									
E																									
F																									
G	7																								
H																									
I																									
J																									
K																									
L	18																								
M																									
N																									
O																									
P	19																								
Q																									
R																									
S																									
T	30																								
U																									
V																									
W																									
X																									
Y	31																								
Z																									

Firm/Agency, Address

SIEK SURVEYING SERVICE
P.O. Box 1765
CASPER
WY 82602

Telephone Number: (307)266-6829

This corner record was prepared by me or under my direction and supervision.
SEAL & SIGNATURE



Corner Name: SW
SBRPEPLS/PLSW, March 1994

Section: 14 T 13 R 68. 6th P.M. Cross-Index No.: N-17

LARAMIE COUNTY, WY